

Space For Hire



Our Philosophy

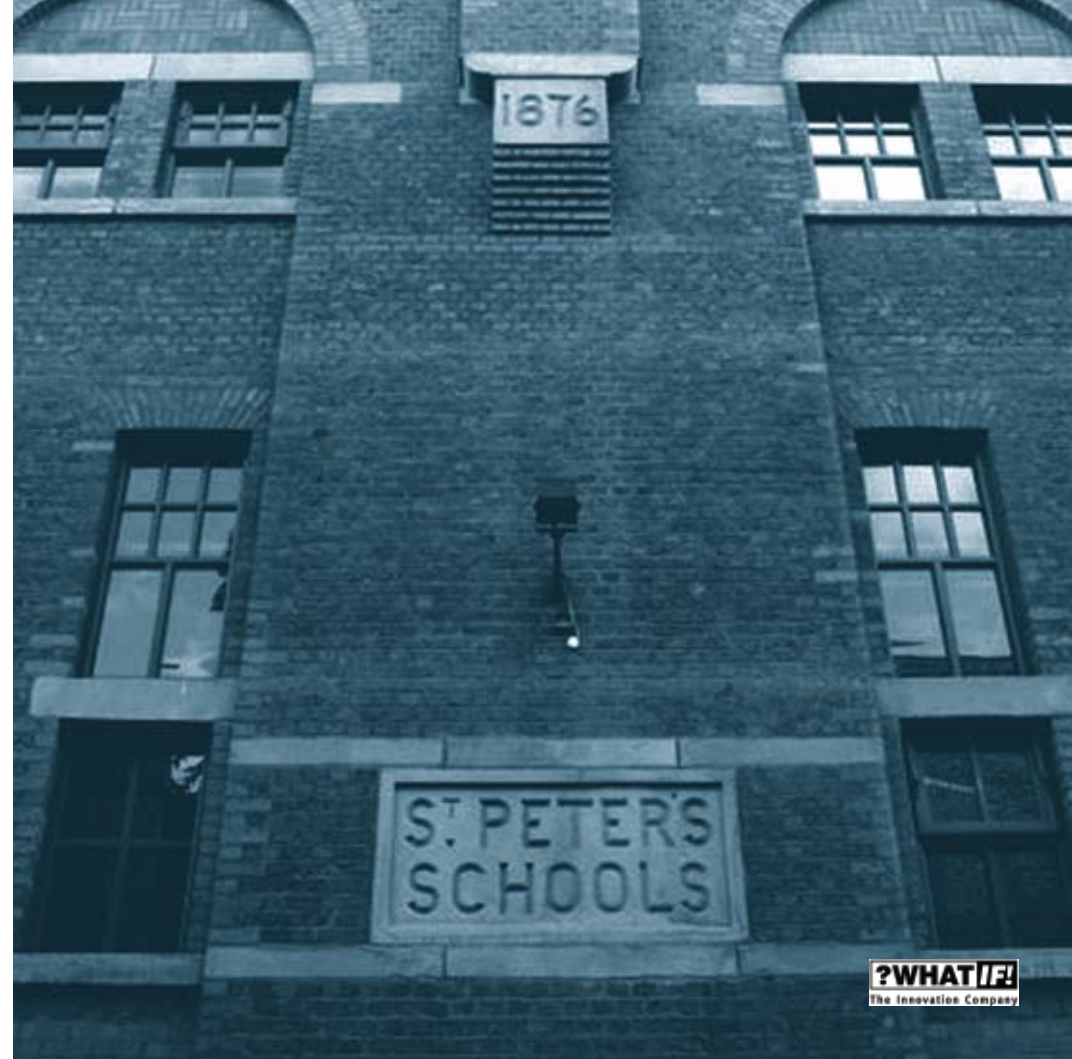
This is no ordinary venue. It's the space in Manchester to create and innovate. If you find bare meeting rooms with a boardroom table and a couple of flip charts an uninspiring place for a productive meeting, then you're in tune with our thinking. Over the last 16 years of innovation and creativity practtioning, we have proven time and again that environment is one of the keys to having a productive, creative and inspiring meeting.

At The Boardwalk you won't find any hard back chairs, grey Formica tables or migraine inducing lighting – which we believe saps your creative energy.

Our Space

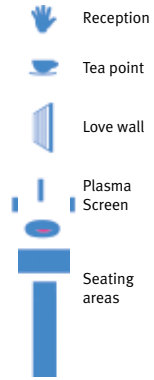
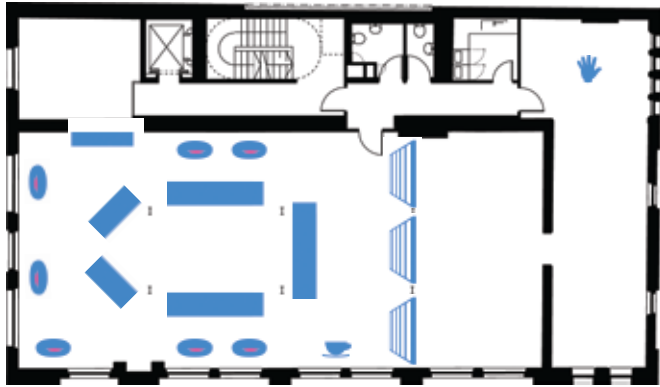
Our room can fit around 15 -20 people comfortably, depending on your set up, and you can hire the space for full or half days, we are flexible to your needs.

The room has a relaxed and informal setting, if you need any other set up just give us a call.



The Boardwalk

Dimensions:
Entrance to window: 9 metres (28 feet)
Partition to wall: 15 metres (47 feet)



The Room

With its human-size bean bags, comfortable sofas, rubber chickens and original Dalek the Boardwalk is the perfect place for sparking creativity, maintaining energy and getting the best from your team. A great space to just be in, it's also designed to stop that afternoon tiredness setting in—the stimulus around you will spark a new conversation, energising the team for the next part of your meeting.



Relaxed atmosphere

Natural light



Creative ideas



The Specifics

The rooms can be used for anything legal and decent - meetings, workshops, brainstorming, drinks parties, photography or video shoots.

The space comprises a range of A/V equipment, a 42" plasma screen, internet access and all the usual things you'd expect. All of this is included in the price and we won't charge you for the odd photocopy or a quick phone call.

Our Heart of House team will be there to assist you in anyway we can:

Equipment (included), plasma screen for presentations, DVD/CD player (for DVD's and music), surround sound speakers, video player, lots of power points, wireless internet access, and flip charts plus pens (two per room), paper and stimulus.

Catering

Food is love: Catering for up to 12 people is included in the price of the room and any extra guests will be charged at an agreed rate.

We can provide you with all or any of the following types of refreshments:-

*** Energising Breakfast:**

Croissants, muffins, cereals, tea, coffee and juice, yoghurts.

*** Nourishing Lunch:**

a) Homemade sandwiches with a tasty choice of soup or quiche and salad, freshly prepared by our local award-winning delicatessen.

b) Buffet style hot and/or cold food/themed by local catering companies.

*** Refreshments:**

In addition to this, we will provide you with 3 servings of tea & coffee throughout the day along with cold juices, soft drinks, fruit, tasty biscuits and sweets.

The Damage

The Boardwalk rate is £1000 per day plus catering and VAT for 12 people.
Any additional catering will be provided at an agreed rate.

We are open from 9.00am – 6.00pm, please call us for alternative timings.

If you need any further information, or would like to visit the space contact
Heart of House Manager on **+44 (0) 161 247 7767** or email us at
theboardwalk@whatifinnovation.com

About Our Neighbourhood

The Boardwalk is a 2 minute walk from the site of the world famous Hacienda club and a 2 minute walk to Manchester's famous Deansgate shopping street. Once you're here there are an abundance of great local restaurants and bars as well as shops, so you can nip out and buy a quick outfit or gift. We also have a canal just one minute walk from our front door, ideal for a breakout stroll.

GMex tram station is round the corner, as is Deansgate station. Manchester Piccadilly main line station is a 10 minute taxi ride away.

By Air

Manchester: 9 miles/14 km
Liverpool John Lennon: 36 miles/58 km
Leeds/Bradford: 49 miles/78 km
East Midlands: 98 miles/157 km

Road

The nearest motorway is the M6/M56 to get into central Manchester, approximately 15 mins by car.

Fresh Air

Whitworth Park and Chorlton Park are both 10 mins by car. The beautiful Peak District countryside is ideal for walking and only 30 mins by train or car.

Shopping

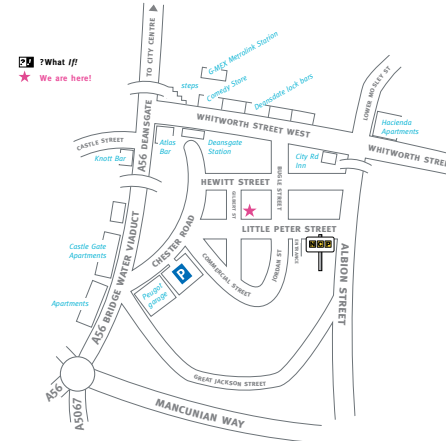
King Street (5 mins walk)
The Northern Quarter (20 mins walk)
The Arndale Centre (15 mins walk)

Local culture

Manchester Art Gallery, The Museum of Science & Industry, Urbis, The Royal Exchange Theatre, The Lowry Theatre, The Curry Mile.

A bit of sport?

Football - Manchester United?
Manchester City? Old Trafford cricket ground, all 15 mins by car.



If you want more information about our wonderful city, please just get in contact on the details opposite.

The Boardwalk Space To Innovate

A little bit about ?What If!

?What If! is the world's largest independent innovation company.

We work with clients who genuinely want to innovate and grow. We help them release the creative potential of their people, products, brands and services.

We do this by working for a fee or as joint venture partners on innovation projects. We also work with clients on their innovation capability – developing skills, organisational structures and mechanisms, and identifying and developing how to lead for successful innovation.

We have a dedicated social innovation division which uses ?What If! skills and resource to support social entrepreneurs.

We are an action-orientated, happy and hard working team of over 300 people with offices in London, Manchester, New York and Shanghai. We work across all 5 continents and have worked projects in over 40 countries, across a wide range of clients and market sectors.

?What If! Clients include; Astra Zeneca, Unilever, Channel 4, Citi Group, BT, Abbott, Samsung, The Coca-Cola Company, Cadbury Schweppes, Shell, BBC, HSBC, British Airways, British Gas Business, The United Nations, Royal Mail, Emap, Coors Brewers, Sainsbury's, Boots and many UK government departments.

We are proud to have been accredited with The Guardians Top 100 Employers for 2006/7 and were also awarded the Financial Times 'Best Place to Work UK' accolade for 2 years consecutively in 2004 & 2005.

In May 2008 we were named 18th in the Sunday Times UK 50 Best Green Companies list.

If you want to know anymore about our business, please contact us on **+44 (0) 20 7535 7500** or at **cassie.lapointe@whatifinnovation.com**

www.whatifinnovation.com

